

We, Vaigha Technologies Private Limited (registered under the Startup India initiative & Kerala Startup Mission), proudly present **Temple Click** — a **NEXT-GEN ERP** solution for efficient and transparent Temple Management.

:: SUPPORTED DEVICES ::



➤ **MODULE (1) - OFFERING MANAGEMENT**

- **User-Friendly Design:** It's designed for ease of use, even for individuals without extensive computer knowledge.
- **Multi-Platform Compatibility:** The system works across various devices including computers, Android mobiles, tablets, and Point of Sale (POS) devices.
- **Multilingual Support:** It supports typing in regional languages, accommodating diverse users and regions.
- **Flexible Booking Management:** Bookings for offerings and services can be recorded as Paid, Advance, Credit, or Pending, providing comprehensive tracking.
- **Devotee Data Management:** The module stores essential devotee information like name, star (birth star), email ID, and mobile number for future reference, aiding in devotee relationship management.

- **Digital Receipting:** Receipts can be conveniently sent to devotees via WhatsApp after billing, enhancing communication and record-keeping.
- **Recurring Bookings:** It supports bookings for multiple days, weeks, or even years, catering to various types of offerings and services.
- **Diverse Payment Options:** Payments can be categorized and processed through various modes, including Cash, QR, Card, Demand Draft (DD), Cheque, or Net Banking.
- **Reporting Capabilities:** Detailed reports can be generated daily, weekly, monthly, yearly, or for custom dates, providing insights into offering trends and financial performance.
- **Multi-Counter Operations:** Temples can operate multiple booking counters, using computers, mobile devices, or a combination, based on their operational needs.

➤ **MODULE (2) - DONATION MANAGEMENT**

- **Comprehensive Donation Management:** All types of donations related to the Temple can be easily managed within this module.
- **WhatsApp Receipts:** Donation receipts can be conveniently sent to donors via WhatsApp.
- **Detailed Reporting:** The system allows for the generation of detailed reports, which can be configured for daily, weekly, monthly, yearly, or any custom date range.
- **Enhanced Transparency:** Each donation head is assigned a separate billing number series, ensuring transparency and ease of tracking for all transactions.

➤ **MODULE (3) - ACCOUNTING AND FINANCE MANAGEMENT**

- **Manage Multiple Bank Accounts:** This feature allows temples to centralize the management of all their bank accounts, providing a unified view of funds and enabling smooth transactions across various banking relationships.
- **Opening & Closing Balance:** Tracks the starting and ending balances of cash or bank accounts for specific accounting periods — essential for accurate temple financial reporting and reconciliation.

- **Cash in Hand:** Refers to the physical cash held by the temple at a given time, indicating immediate liquidity available for daily religious or operational needs.
- **Net Balance:** Represents the overall financial position of an account after accounting for all debits and credits, giving temple administrators a clear picture of available funds or outstanding obligations.
- **Voucher Management:** Enables systematic recording, authorization, and verification of all temple financial transactions using accounting vouchers (e.g., receipt, payment, and journal vouchers), ensuring accurate, transparent, and auditable financial records.
- **Profit and Loss (P&L):** Generates a Profit and Loss statement that summarizes the temple's revenues, donations, expenses, and resulting surplus or deficit over a defined period, offering insights into financial health and sustainability.
- **Multiple Payment Methods – Cash, QR, Card, DD, Cheque, Net Banking**
- Supports a wide range of donation and payment modes for temples — including cash, QR code payments, debit/credit cards, demand drafts (DD), cheques, and online bank transfers — for both incoming contributions and outgoing expenditures.

➤ **MODULE (4) – INVENTORY, STOCK & ASSET MANAGEMENT**

- **Stock in / Stock out timeline:** Provides a historical record and timeline of inventory movement, showing when stock was received and dispatched.
- **Real time stock monitoring:** Enables continuous, up-to-the-minute tracking of stock levels, crucial for accurate inventory status and preventing stockouts or overstocking.
- **Store sales & reports:** Offers functionalities to manage sales transactions at the store level and generate various reports related to sales performance and inventory impact.
- **Multi-Vendor management:** Facilitates the management of relationships and transactions with multiple suppliers, including aspects like order placement, tracking, and communication.
- **Vendor or Item based purchase history & bill management:** Allows for tracking purchase history based on specific vendors or individual items, along with the management of associated bills and invoices.

- **Generate detailed inventory reports:** Provides capabilities to create comprehensive reports offering insights into inventory valuation, stock aging, movement patterns, and other critical metrics for informed decision-making.
- **Record Assets with Photograph:** Enables the documentation of fixed assets by attaching photographs, which can aid in visual identification and record-keeping for asset management purposes.

➤ **MODULE (5) - ONLINE PUJA & DONATION MANAGEMENT**

- All online puja & donation booking services through TempleClick's website and mobile app are completely free for the Temple.
- No service charges are required from the Temple.
- Our online booking system can be seamlessly integrated into the Temple's existing website at no additional cost.
- All booking information is updated live on the Temple's dashboard.
- Offerings are confirmed only after successful payment via the payment gateway, ensuring Temples perform only paid services.
- Payment gateway charges and platform fees are borne by the devotee, not the Temple.
- Devotees receive booking confirmations and updates via SMS, WhatsApp, or Email.



Counter Booking Methods



1



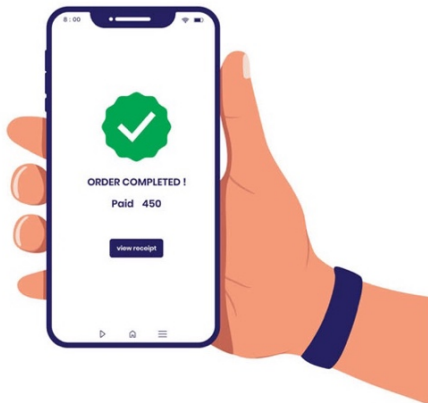
Computer



Dot Matrix / Laser / Thermal

OR

2



Android Mob/Tab with Dynamic QR

3



All in One Android/Windows
Touch POS

OR

All in One hand held POS

4



5



Kiosk

* Hardware is to be purchased separately

CLOUD-BASED CENTRAL MANAGEMENT SOLUTION



ACCOUNTS



INVENTORY



COUNTER



ONLINE



OTHERS

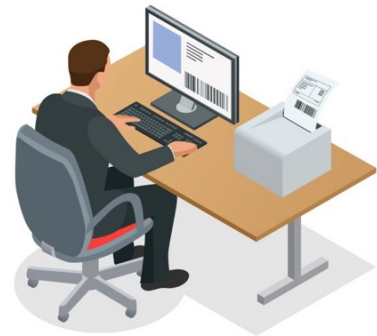


Single Admin DASHBOARD for all the platforms.
Bookings on the mobile apps, websites, counter &
POS will be in sync with each other.

Website



Temple Counter

A central white rectangular box representing the Admin Dashboard. It contains a login form with the following elements: an 'Email' input field, a 'Password' input field, a 'Forgot Password?' link in blue text, and a blue 'Login' button. Four thick grey arrows point from the box to the four platform icons: up to the Website, up to the Temple Counter, down to the POS, and down to the Mobile App.

POS



Mobile App

Online booking receipt decoding - 3 Methods*

All in One QR Reader & Printer

1



OR



Scan QR using any Android Mobile

Thermal Printer

2



QR Scanner



Computer



Dot Matrix / Laser / Thermal

3

Using the Mobile number and
Receipt code, Devotees can print the
receipt at the Online counter



* Hardware is to be purchased separately

➤ **CLOUD FEATURES & ADVANTAGES**

- **Remote Data Access:** Temple administrators can remotely manage all data, including puja bookings, donations, accounts, inventory, and reports, using a laptop or mobile device.
- **Multi-Counter Billing:** Billing operations can be performed simultaneously from multiple counters using computers or mobile devices.
- **Cloud-Based Security & Accessibility:** As a cloud-based platform, TempleClick ensures temple data is always secure, backed up, and easily accessible.
- **Minimal Hardware Requirements:** It only requires a basic computer configuration or an Android device, eliminating the need for costly local servers or complex networking.
- **Staff Account Management:** Temple administrators can create multiple staff accounts and assign permissions based on organizational hierarchy, enhancing operational control and security.

Thanks & Regards,

Ranjith

MD & CEO

Vaigha Technologies Private Limited

www.templeclick.com

9746234566 / 9962991919

ranjith@templeclick.com

templeclickapp@gmail.com

